

PIONEER SERIES

PIONEER R3 G6487



R.R.P.

EAN: 8431284816995

Foldable treadmill with electric inclination, 2,75CV and up to 18 km/h speed for those who want to walk or start jogging with a stable and secure treadmill.

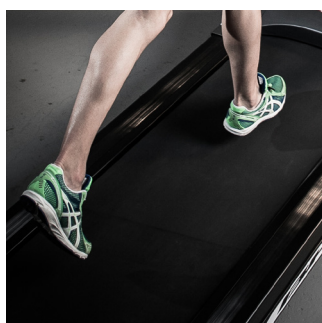


Monitor

Measurements:

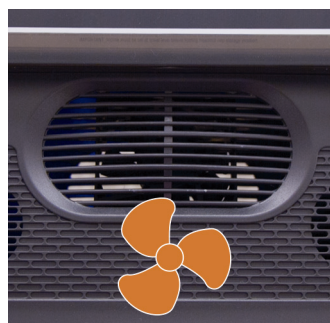
Distance, Time, Speed, Calories, Pulse, Inclination

- Max. user weight: 115Kg
- Weight: 62Kg
- Dimensions: 162cm x 74cm x 162cm
- Power: 2,75CV/1,5CV
- Speed: 1-18km/h
- Running surface: 125x44cm



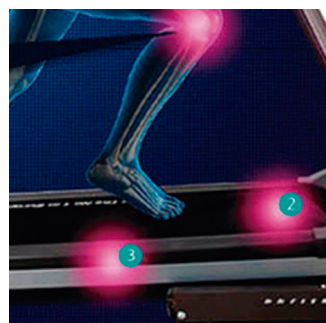
POWERFUL MOTOR

Get your workouts to the maximum with the 2,75CV motor which allows up to 18 km/h speed.



FAN

It keeps your body temperature regulated during training.



6 ELASTOMERS

Thanks to the damping of the 6 elastomers, your joints do not suffer with you workout.



FOLDING

Fold and store your machine easily.



Specs	Pioneer R3 G6487
Use frequency	Regular
Maximum user weight	115Kg
Power (peak/continue)	2,75CV/1,5CV
Speed	1-18Km/h
Max. electrical elevation	0-12
ECO mode	Yes
Speed instant keys	Yes
Elevation instant keys	Yes
Running area (L x W)	125x44cm
Damping system	6 elastomers
Contact heart rate measuring	Yes
Fan	Yes
Soft Drop System (SDS)	Yes
Transport wheels	Yes
Length	162cm
Width	74cm
Height	146cm
Weight	62Kg
Foldable	Yes
Programs	
Preset programs (Prg)	12
Random program (RP)	No
Customizable profiles (uprg)	No
Fitness test (FT)	No
Heart rate control program (HRC)	No
Recovery Program (RT)	No
Body Fat test (BF)	Yes
Monitor	
Screen	Blue backlit LCD
Telemetric heartrate	No
Bluetooth heartrate	No
iConcept	No

 Notes